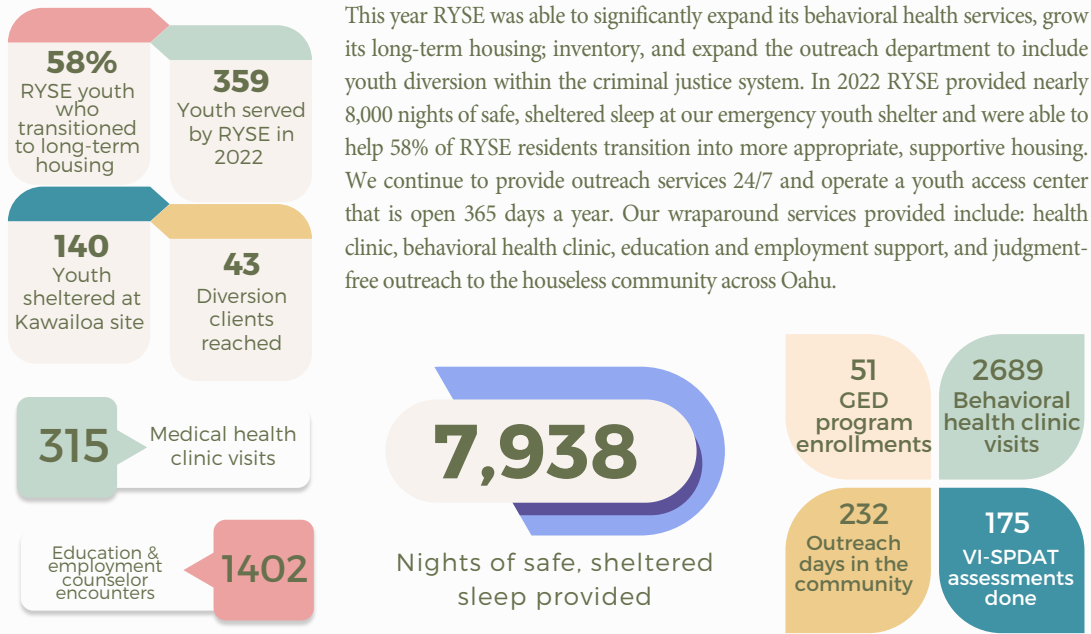


THE WORK

Empowering Hawaii's street youth to move beyond homelessness



FATIHA & DOMINIQUE



For over three years, international artists Fatiha Kheddaoui Curran and Dominique Meyer Gere have been volunteering at RYSE to provide art therapy to RYSE youth. In crisis and emergency situations, providing basic needs like food and shelter are paramount. but at RYSE, we also know that helping young people end their homelessness requires a holistic, wrap-around approach. Monthly art therapy courses include creating original visual mixed-media pieces, mural painting, field trips to the art exhibits, and participating in the Honolulu Museum of Art installations. Pictured above: RYSE youth embroidering the Nomadic Art Net; Fatiha and Dominique at Rebecca Louise Law's "Awakening" installation.